

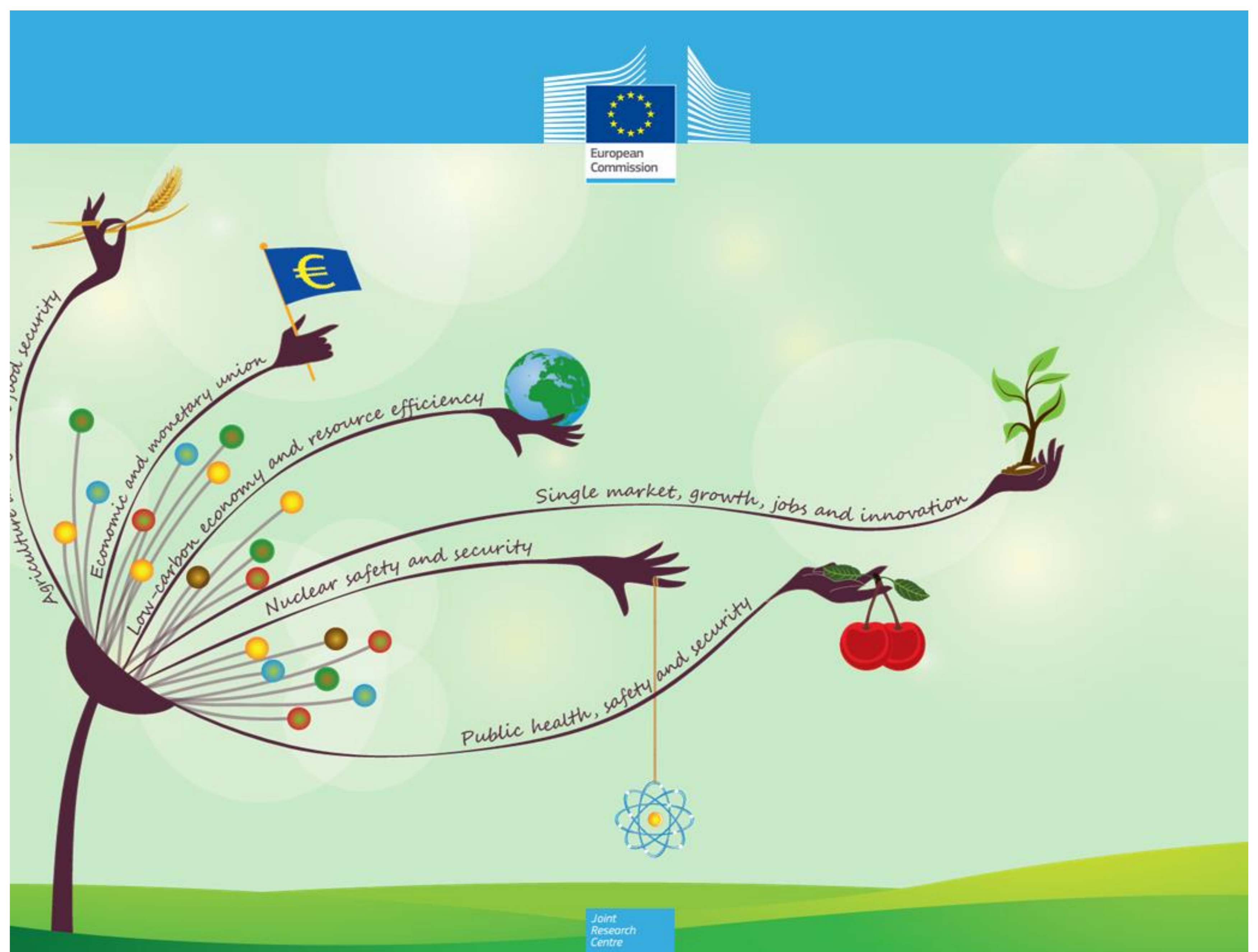
<https://ec.europa.eu/jrc> **Joint Research Centre (JRC)**

**WHO WE ARE**

- ★ The Joint Research Centre (JRC) is the European Commission's in-house science service which employs scientists to carry out research in order to provide independent scientific advice and support to EU policy. There are seven scientific institutes and over 3000 people working for JRC.
- ★ The **Sustainability Assessment unit** of the JRC is responsible for ESMERALDA.

**OUR EXPERIENCE**

- ★ The Sustainability Assessment unit provides methodological guidance, consultancy and training for impact assessment tools.
- ★ Our activities and recent achievements can be grouped under the following headings:
  - The regional modelling platform (LUISA) and EU scenario based assessments of regional and urban policies.
  - The methodological or EU Product Policies, in support of strengthening and greening the EU Single Market.
  - Support to the EU policies and partnerships in the area of Raw Materials.
  - Indicators for environmental and social assessments, life cycle assessments of industrial processes and products.
  - Methods and models for sustainability assessments and information production in the context of circular economy and waste management, bio-economy and unconventional gas.
  - Support to the EU objective on Mapping and Assessment of Ecosystems and their Services (MAES)



**WHAT WE DO IN ESMERALDA**

- ★ Networking activities
- ★ Help design the flexible mapping and assessment tool
- ★ Support the mapping workshops
- ★ Link to the working group MAES

**WE ARE ALSO INVOLVED IN** OpenNESS, BESAFE



**Grazia Zulian**

- ★ Spatially explicit ecosystem services models
- ★ Urban ecosystem services
- ★ Cultural ecosystem services



**Joachim Maes**

- ★ Used to be a marine fish biologist
- ★ Then an emissions modeler
- ★ Now an ecosystem services mapper