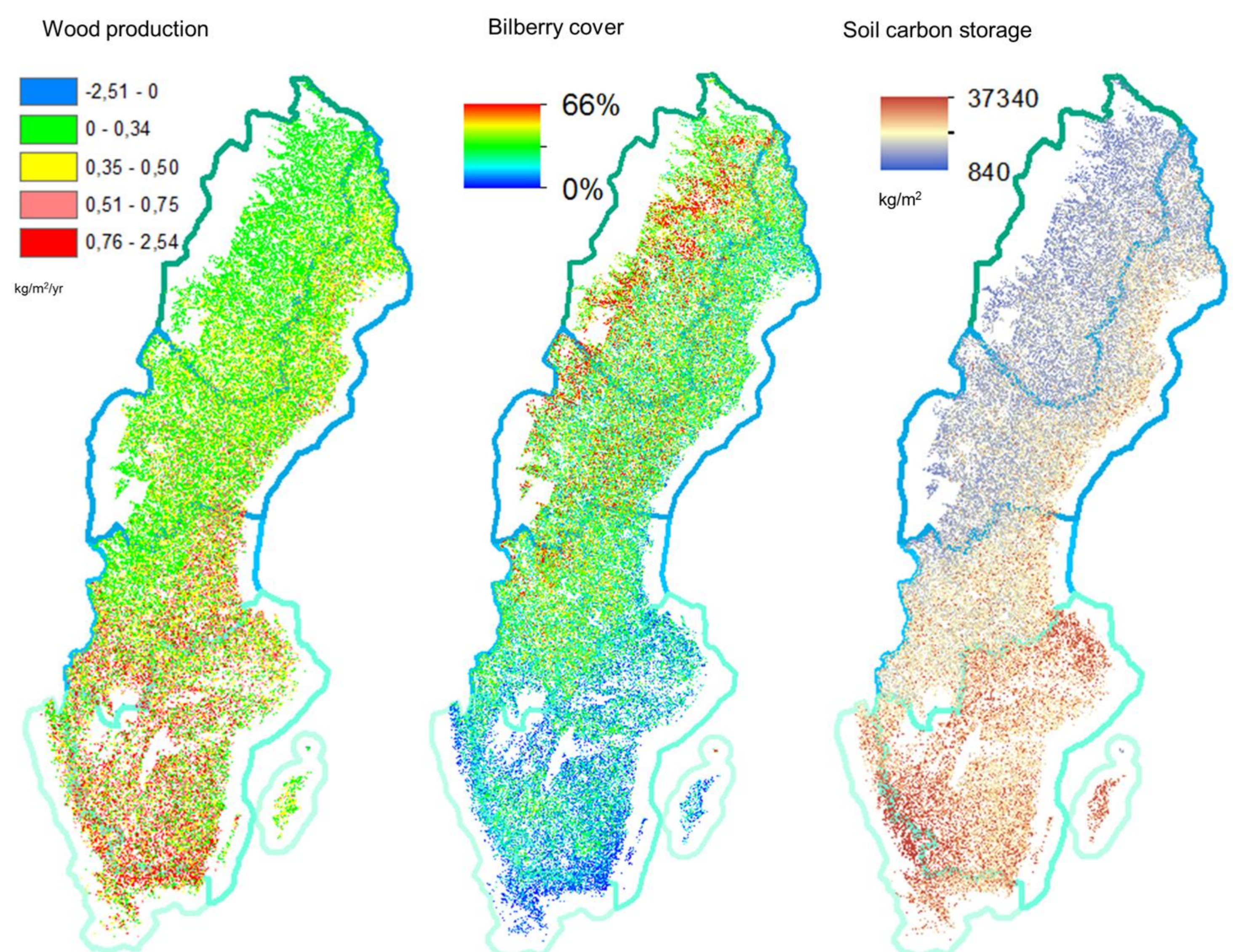


WHO WE ARE

- ★ Hannah Östergård is biodiversity policy officer at SEPA's Nature & Biodiversity Unit of the Research & Assessment Department, coordinator
- ★ Anna Mellin is an analyst at SwAM's unit for Research and environmental objectives, M.Sc in environmental economics
- ★ Ola Inghe is biodiversity monitoring officer at SEPA's Nature & Biodiversity Unit of the Research & Assessment Department, Landscape monitoring
- ★ Professor Tord Snäll at the Swedish Species Information Centre, SLU. His expertise includes modelling and prediction of biodiversity and ecosystem services.
- ★ Dr Johan Svensson is researcher at the Department of Wildlife, Fish and Environmental Studies, SLU. His expertise includes landscape biodiversity monitoring and ecology, adaptive forest management and sustainable landscape management

OUR EXPERIENCE

- ★ The Swedish Environmental Protection Agency (SEPA)
- ★ is Sweden's national government agency for terrestrial environments (including air and wetlands), outdoor recreation, wildlife management and hunting
- ★ on ecosystem assessment issues works in close collaboration with **The Swedish Agency for Marine and Water Management, SwAM**
- ★ key tasks are to synthesize knowledge and present proposals for environmental policy and legislation to the Swedish Government, and work to ensure that environmental policy decisions are implemented
- ★ sets standards (nationally) and acts as a guide for – and as coordinator, financier and evaluator of - environmental work, e.g. in relation to other national agencies
- ★ funds environmental and wildlife research
- ★ supplies expert knowledge on environmental issues to the government on national, EU and international work
- ★ is Sweden's National Focal Point of the IPBES
- ★ monitors and reports on the state of the environment, and promotes environmental policy implementation works to attain the national environmental quality objectives decided by the Swedish Parliament
- ★ **Swedish University of Agricultural Sciences, SLU**, a university with comprehensive knowledge of the sustainable use of biological natural resources, as well as of the environmental and life sciences



WHAT WE DO IN ESMERALDA

- ★ WP 3 and WP 4 Modelling and predicting biodiversity and ecosystem services.
- ★ WP 5: Case study - National monitoring for assessing and valuating ecosystem services in Fennoscandian alpine and boreal landscapes. A case study that emphasizes ecosystem services as indicators, and in landscape planning and decision-making

WE ARE ALSO INVOLVED IN

Nordic study on ecosystem assessment for IPBES, BiodivERsA, BONUS networks, and MAES amongst others



**Hannah
Östergård**

- ★ Biodiversity policy officer, PhD in Ecology and serves as coordinator between research and policy implementation at SEPA's Nature & Biodiversity Unit of the Research & Assessment Department



**Anna
Mellin**

- ★ MSc in environmental economics. Works with socio economic analysis on marine and water issues at SwAM, a government agency that works for flourishing seas, lakes and streams for the benefit and enjoyment of all



Tord Snäll

- ★ Professor of ecology, ecological and conservation biology research: future metapopulation size and levels of ecosystem services given scenarios of land-use or climate change, spatial conservation prioritization, and the usefulness of citizen science data on basic and applied questions



**Johan
Svensson**

- ★ PhD in Ecology, research scientist in landscape ecology. International background with various large-scale project and programs. Focuses on applied research and has continuous cooperation with forest - and nature conservation agencies