



<http://www.niggg.bas.bg/en/>

NIGGG - BAS

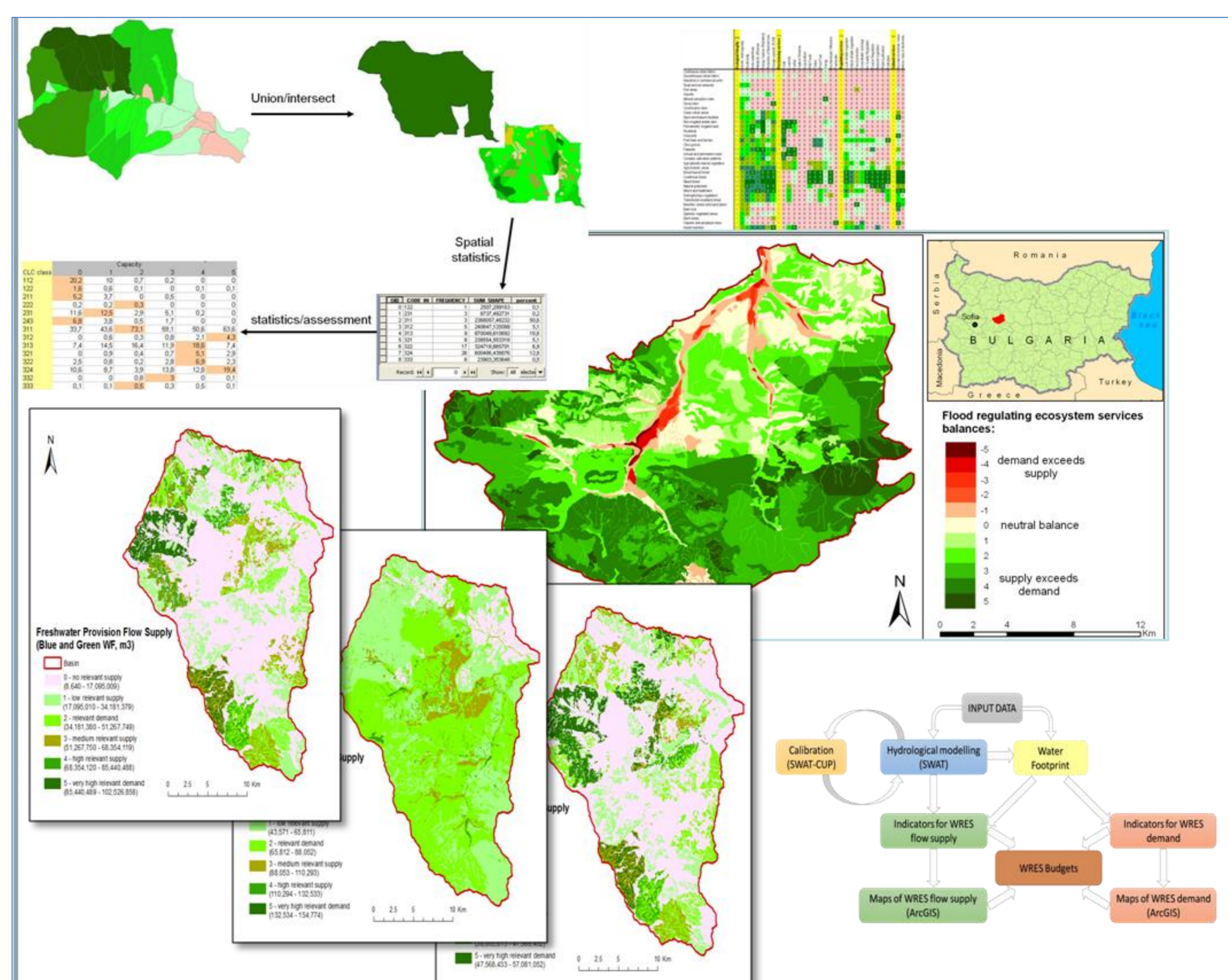
www.esmeralda-project.eu

WHO WE ARE

- ★ The Department of Geography is a research unit at the National Institute of Geophysics, Geodesy and Geography - Bulgarian Academy of Sciences. The main research activities of the department are focused on the spatial differentiation, dynamics and relationships between the processes and phenomena of nature and society within Bulgaria's borders and beyond. The Department provides independent scientific services for the conceptions, development, monitoring and implementation of national, regional and local policies in Bulgaria. It takes responsibility for the fundamental national and European research priorities in respect to the present and future organization of the overall geographic space of the country. A research group of the department works in the field of ES assessment and mapping, implementing it in several projects funded by national (NSF) and European (FP7) institutions.

OUR EXPERIENCE

- ★ Members of our team are actively involved in the project Methodological support for ecosystem service assessment and biophysical valuation conducted under the Programme „BG03 Biodiversity and ecosystem services“ within the EEA FM.
- ★ We are also involved in TUNESinURB project, which aims to create an ecosystem-based information system on urban ecosystems and their ecosystem services through the application of a set of indicators for assessing and mapping with a view to better understanding and implementation of sector policies.
- ★ Within FP7 SWAN project our contribution was directed to mapping and assessment of four water related ecosystem services – flood regulation, water supply, water purification and groundwater recharge.
- ★ Spatial Dimensions and Valuation of the Ecosystem Services in Bulgaria - project held by NIGGG directed to develop GIS databases for case study areas in different parts of the country and perform the matrix based approach for ecosystem services assessment.
- ★ Mapping and assessment in mountain case study areas under project “Ecosystem based information system covering sensitive mountain areas in Bulgaria”. The project aims to integrate data from different partners to identify the main indicators of ecosystem services provided by sensitive mountain areas.



WHAT WE DO IN ESMERALDA

- ★ Stakeholders identification (T2.1),
- ★ Review of existing mapping practices (T3.1);
- ★ Mapping biophysical ecosystem services dimensions (T3.4);
- ★ Ecosystem services assessment in mountain areas (T4.1);
- ★ Case studies application in WP5.

WE ARE ALSO INVOLVED IN BG03.PDP2 **Methodological support for ecosystem service assessment and biophysical valuation** <http://bg03.gmc-bg.com/>



Stoyan Nedkov

His research area is landscape ecology and application of GIS in environmental assessment. His current work is focused on assessment and accounting of ES at landscape level, use of GIS and spatial modeling for mapping of flood regulation ecosystem services.



Svetla Doncheva

She is a senior researcher at the Institute of Biodiversity and ecosystem research – BAS. Her research is in the field of functional ecology, adaptation of forest ecosystems, biodiversity Assessment, environmental stress, environmental risk and impact assessment.



Mariyana Nikolova

She is working in field of physical geography, natural hazards and risk management. Currently hers research interest is focused on risk from climate change for mountain environmental systems, sustainable water use and hydro-climatic hazards and extremes.



Boian Koulov

His research is in the field environmental policy and politics, environmental sustainability, marine regions, integrated watershed-based management, globalization, regional development.