



www.uam.es/gruposinv/socioeco/en **Social-Ecological System Laboratory** www.esmeralda-project.eu

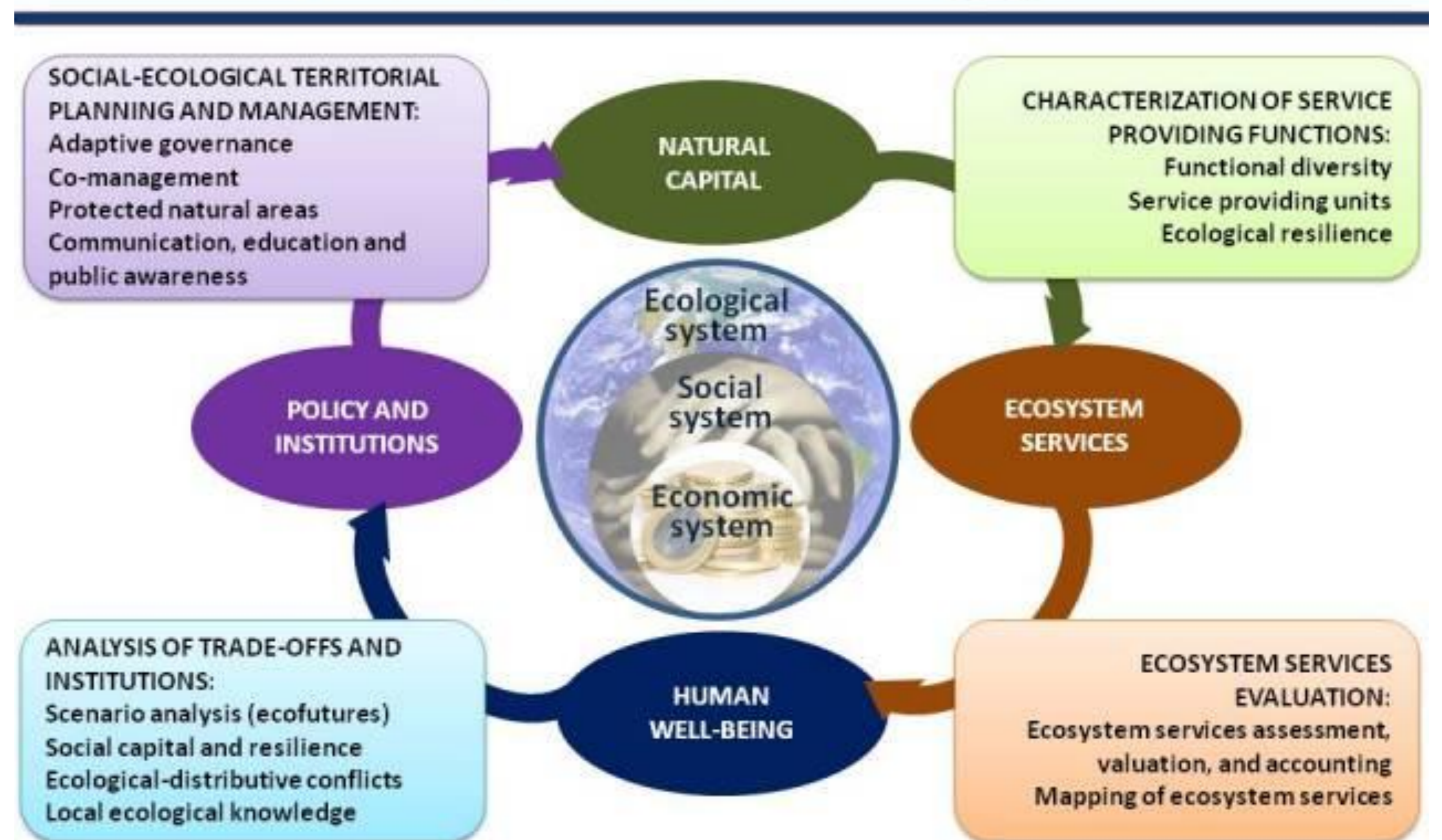
**WHO WE ARE**

- ★ We are a research group that focuses on exploring the structure, functioning and dynamics of social-ecological systems (humans in nature) from a systemic and transdisciplinary approach, to tackle complex issues related to sustainability.
- ★ The scope of our research covers a wide range of topics in the frontiers among nature, culture and society. Our work can be framed in what has been called "Sustainability Science". From integrative disciplines such as Ecological Economics, Political Ecology, Systems Ecology, and Conservation Ecology, we aim to develop new strategies and conceptual frameworks that contribute to the transition toward sustainability.
- ★ Our research is intended to bring down barriers and tend bridges between social and biophysical sciences, as well as between researchers and decision-makers, to build adaptive capacities in the face of current global change.

**OUR EXPERIENCE**

- ★ **Ecosystem services evaluation, characterization and mapping:** Characterize and prioritize response options to implement strategies grounded in the social dimension of ecosystems and its biodiversity.
- ★ **Ecosystem assessment and valuation:** Improve the understanding of the relationships between ecosystems, biodiversity and human wellbeing.
- ★ **Socio-ecological territorial planning and management:** Create a baseline of the interdisciplinary knowledge of the nature-society interface under the framework of sustainability science.
- ★ **Institutional analysis and governance systems:** Identify priorities for action in problems related to biodiversity -ecosystem interactions.
- ★ **Assessment and management of social-ecological systems:** Establish research priorities under a new international scientific agenda focused on the interactions of nature and society.
- ★ **Characterization of service providing functions:** Design a conceptual and methodological framework as an essential tool for environmental planning and management.
- ★ **Human wellbeing analysis:** Help to build the adaptive capacity of individuals and institutions facing the challenge of global change.

**Conceptual framework and research lines of the Social-Ecological Systems Lab**  
Sustainability Science: Assessing and managing social-ecological resilience in a changing world



**WHAT WE DO IN ESMERALDA**

- ★ UAM leads WP3, aimed at design the flexible mapping tool in Europe.
- ★ UAM contributes also to all other WPs to ensure coordination with WP3 activities.
- ★ Member of the project's Executive Board (EB)

**WE ARE ALSO INVOLVED IN** MAES, MESEU, Spanish National Ecosystem Assessment, Ecosystem Services Partnership, OpenNess, IPBES



**Fernando Santos**

- ★ Senior Researcher
- ★ fernando.santo.martin@uam.es
- ★ Phone: +34 914978008
- ★ [https://www.uam.es/gruposinv/socioeco/ficha\\_equipo\\_FSantos.htm](https://www.uam.es/gruposinv/socioeco/ficha_equipo_FSantos.htm)



**Carlos Montes**

- ★ Full professor
- ★ carlos.montes@uam.es
- ★ Phone: +34 914978002
- ★ [www.uam.es/gruposinv/socioeco/ficha\\_equipo\\_CMontes.htm](http://www.uam.es/gruposinv/socioeco/ficha_equipo_CMontes.htm)



**José A. González**

- ★ Associate professor
- ★ jose.gonzalez@uam.es
- ★ Phone: +34 914978913
- ★ [www.uam.es/gruposinv/socioeco/ficha\\_equipo\\_JAGonzalez\\_en.htm](http://www.uam.es/gruposinv/socioeco/ficha_equipo_JAGonzalez_en.htm)



**César López**

- ★ Associate professor
- ★ cesar.lopez@uam.es
- ★ Phone: +34 914978097
- ★ [https://www.uam.es/gruposinv/socioeco/ficha\\_equipo\\_CLopez.htm](https://www.uam.es/gruposinv/socioeco/ficha_equipo_CLopez.htm)