



An Roinn Ealaíon, Oidhreachta,
Gnóthaí Réigiúnacha, Tuaithe agus Gaeltachta

Department of Arts, Heritage,
Regional, Rural and Gaeltacht Affairs



<https://www.npws.ie/>
<http://dahg.maps.arcgis.com/>

National Parks and Wildlife Service (NPWS) Ireland

www.esmeralda-project.eu

WHO WE ARE

- ★ National Parks and Wildlife Service (NPWS) is part of the Heritage Division of the Department of Arts, Heritage, Regional, Rural and Gaeltacht Affairs. NPWS is the government body in Ireland with responsibility for securing the conservation of a representative range of ecosystems to maintain and enhance populations of flora and fauna in Ireland.
- ★ This is achieved through a number of means, including; implementation of National and EU legislation and policies for nature conservation and biodiversity including the EU Habitats and Birds Directives, ratification and implementation of the range of international Conventions and Agreements relating to the natural heritage, designation of protected areas, management, maintenance and development of State-owned National Parks and Nature Reserves, provision of advice on nature conservation and protected areas, promotion of awareness of natural heritage and biodiversity issues through education, outreach to schools and engaging with stakeholders.

OUR EXPERIENCE

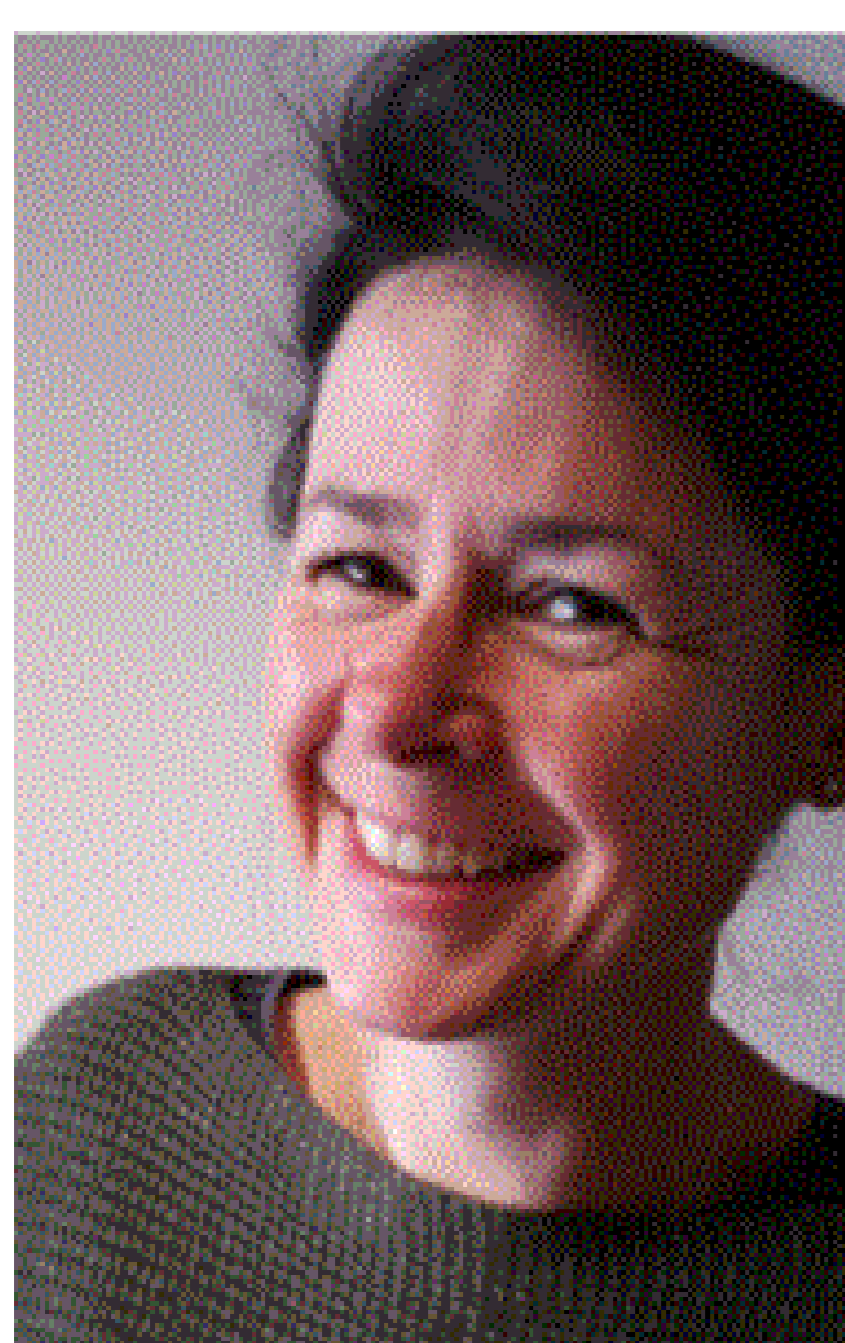
- ★ NPWS is the Irish representative on the EU MAES Working Group and has commissioned a national pilot on mapping and assessing a suite of ecosystem services in Ireland in consultation with a range of stakeholders in Ireland which has recently completed.
- ★ NPWS is one of the founding members, and a co funder of the Irish Forum on Natural Capital and participates in its Steering and a number of its Working Groups.
- ★ NPWS is working with a number of national, regional and local authorities and NGOs in Ireland on a coordinated engagement in the extended Urban ecosystem services pilot (EnRoute) under MAES.
- ★ NPWS is also working with the Kerry LIFE project team and partners to undertake local ecosystem service assessment in agricultural catchments in Kerry.



WHAT WE DO IN ESMERALDA

- ★ NPWS will primarily contribute to WP6 Dissemination and Knowledge Exchange, with a focus on engagement at national level
- Some additional contributions will be made to
- ★ WP4 Assessment Methods &
 - ★ WP 5 Methods testing

WE ARE ALSO INVOLVED IN MAES Working Group, EnRoute



Gemma Weir

- ★ Environmental and Spatial Scientist with Science and Biodiversity section of NPWS.
- ★ National representative in WG of MAES of DG Environment
- ★ ES mapping and modelling, ES indicator development
- ★ Email: Gemma.weir@ahg.gov.ie